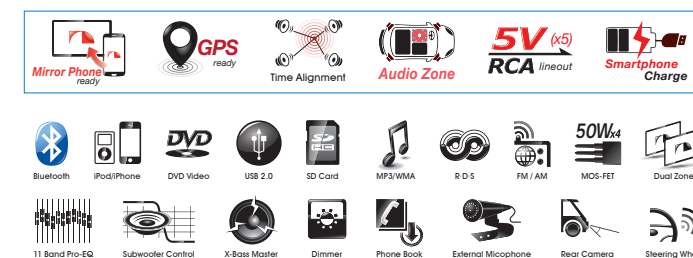


NA2750

Multimedia DVD/CD/USB/SD Receiver with Touch Panel Monitor



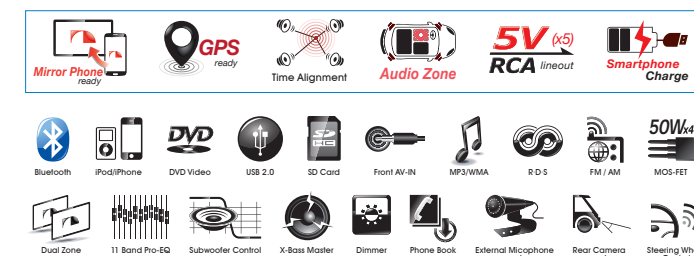
NA1850

Multimedia DVD/CD/USB/SD Receiver with In-Dash Widescreen Touch Panel Monitor



NA2650

Multimedia DVD/CD/USB/SD Receiver with Touch Panel Monitor



NA1650

Multimedia DVD/CD/USB/SD Receiver with Touch Panel Monitor



Optional Accessories



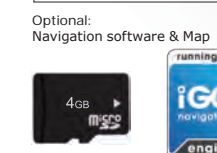
MB1

Mirror Phone Box

- Mirror your smartphone to AV screen
- 2 way touch screen control
- Support most of Android smartphones in the market
- Support iPhone4/iPhone 4S/iPhone 5 (Mirror only, 2 way control not supported)



Mirror Ready Models:
NA2750, NA1850, NA2650, NA1650, NA1550



Optional:
for NA2750
NA1800
NA2650



**CAR AUDIO
2014**



www.nakamichicaraudio.com

AV RECEIVERS

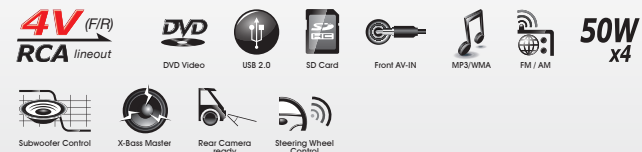
NA1550

Multimedia DVD/CD/USB/SD Receiver with Touch Panel Monitor



NA130

DVD/USB/SD Receiver



DVD/CD/USB/SD RECEIVERS

NA788

2 din CD/USB/SD Receiver



5V(F/R)
RCA lineout

32K
variable color
illumination



NA780 / NA708

2 din USB/SD Receiver



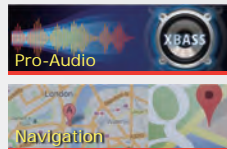
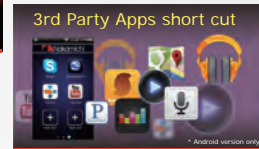
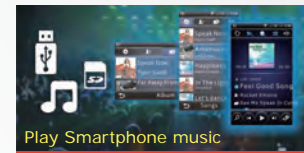
APPS RADIO
(for NA708)

4V(F/R)
RCA lineout



APPS RADIO

NA708, NA88



NA400

DVD/CD/USB Receiver



NA350iBTR / NA300iR / NA250BTR / NA200R

CD/USB/SD Receiver



5V(F/R)
RCA lineout

32K
variable color
illumination

	APPS RADIO	32K variable color illumination	RCA lineout	Bluetooth	iPod/iPhone	Compact Disc	USB 2.0	SD Card	Front AUX-IN	MP3/WMA	RDS	FM / AM	Subwoofer Control	X-Bass Master	MOS-FET	Titanium Chassis	Detachable Panel	iEQ
NA788		✓	4V(F/R)	✓	✓	CD	✓ (x2)	✓	✓	✓	✓	✓	✓	✓	✓	✓	✓	3-band Para.
NA780			2V(R)			CD	✓ (x2)	✓	✓	✓	✓	✓	✓	✓	50Wx4			3-band Para.
NA708	✓		4V(F/R)	✓			✓ (x2)	✓	✓	✓	✓	✓	✓	✓	✓			3-band Para.
NA400			3V(F/R)			DVD	✓		✓	✓		✓	✓	✓	✓		✓	3-band Para.
NA350iBTR		✓	5V(F/R)	✓	✓	CD	✓	✓	✓	✓	✓	✓	✓	✓	✓	✓	✓	3-band Para.
NA300iR		✓	5V(F/R)		✓	CD	✓	✓	✓	✓	✓	✓	✓	✓	✓	✓	✓	3-band Para.
NA250BTR		✓	5V(F/R)	✓		CD	✓	✓	✓	✓	✓	✓	✓	✓	✓	✓	✓	3-band Para.
NA200R		✓	5V(F/R)			CD	✓	✓	✓	✓	✓	✓	✓	✓	✓	✓	✓	3-band Para.
NA99i			1.5V(R)		✓	CD	✓		✓	✓		✓		✓	✓		✓	3-band Para.
NA98s			1.5V(R)			CD	✓		✓	✓		✓		✓	✓	✓	✓	3-band Para.
NA98			1.5V(R)			CD	✓		✓	✓		✓		✓	✓		✓	3-band Para.
NA97			2V(R)			CD	USB 1.1	✓	✓	✓		✓	✓	✓	✓	✓	✓	3-band Para.
NA88	✓		4V(F/R)				✓	✓	✓	✓		✓	✓	✓	✓		✓	3-band Para.
NA85			1.5V(R)	✓			✓	✓	✓	✓		✓	✓	✓	✓		✓	3-band Para.
NA80			1.5V(R)				✓	✓	✓	✓		✓	✓	✓	✓		✓	3-band Para.

NA99i

CD/USB Receiver



NA98s / NA98

CD/USB Receiver



NA97

CD/USB Receiver



NA88 / NA85

USB/SD Receiver



APPS RADIO
(for NA88)

NA80

USB/SD Receiver



DVR / REARVIEW MIRROR

ND57

2.4"

FULL HD
1080p

- H.264, 1920x1080 (1080P) Full HD high definition video resolution @30fps, 1280x720 (720P) @30fps.
- 3.5MP 1/3" CMOS sensor
- Wide Angle Lens (Diagonal 128°, F2.0)
- 2.4" (480x234) LCD Screen
- G-sensor built-in
- Internal memory: 32MB flash memory,
- External memory: up to 32GB Micro SD, SDHC supported
- Interface: USB2.0, HDMI, DC-in
- Li-polymer battery 470mAh
- TPMS supported



ND37

2.7"

FULL HD
1080p

- 2.7-inch high-definition TFT-LCD screen
- FULL HD: 1920x1080 /HD:1920x720 / VGA (640x480) , @30fps
- JPEG: 12M (4032x3024) / VGA (640x480)
- 148° horizontal extra-wide viewing angle
- NTSC/PAL TV output
- built-in mic/speaker
- built-in li-ion battery rechargeable
- support micro SD card (not included): up to 32GB
- interface: AV-out & USB 2.0
- cycle recording
- private and compact design



ND271

2.7"

FULL HD
1080p

- AVI: 1920x1080 @30fps, 1280x720 @60fps
- 5.0 Mega-pixel, JPEG
- 170° horizontal extra-wide viewing angle
- G-sensor
- interface: AV-out & USB 2.0 & HDMI

ND27

2.7"

VGA

- AVI: 1280x720 / VGA (640x480) , @25fps
- JPEG: 1.3M (1280x1024) / VGA (640x480)
- 110° horizontal extra-wide viewing angle
- interface: AV-out & USB 2.0

Same feature:

- 2.7-inch high-definition TFT-LCD screen
- NTSC/PAL TV output
- built-in mic/speaker
- built-in li-ion battery rechargeable
- support micro SD card (not included): up to 32GB
- cycle recording
- private and compact design
- Unit dimension: 90(L) x 49(W) x 35(H)mm



ND17

1.41"

720p

- 1.41-inch high-definition TFT-LCD screen
- HD: 1280x720 / VGA: 640x480 , @30fps
- JPEG: 3M(2048x1536),2M(1600x1200),1.3M(1520x864),VGA(640x480)
- 100° horizontal extra-wide viewing angle
- built-in mic/speaker
- built-in li-ion battery rechargeable
- support micro SD card (not included): up to 32GB
- interface: USB 2.0
- cycle recording
- private and compact design



ND-M1102

2.7"

720p

ND-M1103

3.5"

720p

Rearview Mirror Driving Record Device

- 2.7 inch TFT 24-bit high-definition LCD screen
- HD 720p(1280x720) 30fps route recording
- 6 Glass 1/2.5" HD sensor wide screen
- Video format H.264/MPEG4-AVC decoding technique
- Real time & date display on video
- G-Sensor weight speed sensor auto saved file
- Support car reversing photography
- With LED reading light and money noted identification light
- Rear view mirror with low reflection
- PC/ABS engineering grade high impact resistance fuselage



SP SERIES SPEAKERS

SP-W3500D 12"
4Ω + 4Ω peak power
450W RMS **3000W**



SP-S6980 6x9"
4Ω / 3-way peak power
80W RMS **600W**



SP-W3500 12"
4Ω + 4Ω peak power
350W RMS **2500W**



SP-S1630 6.5"
4Ω / 3-way peak power
40W RMS **420W**



SP-CS680 6.5"
4Ω / 2-way peak power
50W RMS **480W**



SP-CS68s 6.5"
4Ω / 2-way peak power
45W RMS **420W**



SP-T25 25mm V.C.
4Ω peak power
15W RMS **150W**



SP SERIES SPEAKERS

SP-W310 12"
4Ω + 4Ω peak power
300W RMS **2500W**



SP-W30S 12"
4Ω peak power
200W RMS **1500W**



SP-W25S 10"
4Ω peak power
150W RMS **1000W**



SP-CS63 6"
4Ω / 2-way peak power
30W RMS **320W**



SP-T13 13mm V.C.
4Ω peak power
10W RMS **100W**



SP-S6920 6x9"
4Ω / 2-way peak power
30W RMS **360W**



SP-S1620 6.5"
4Ω / 2-way peak power
30W RMS **300W**



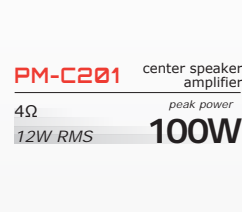
SP-S1320 5.25"
4Ω / 2-way peak power
25W RMS **250W**



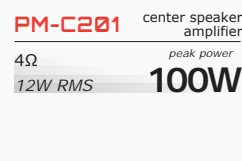
SP-S1020 4"
4Ω / 2-way peak power
20W RMS **210W**



SP-C5 center speaker
4Ω peak power
15W RMS **120W**



PM-C201 center speaker
4Ω peak power
12W RMS **100W**



N SERIES SPEAKERS

NG 112 12"
4Ω + 4Ω peak power
250W RMS **2000W**



NSE 600 6.5"
4Ω / 2-way peak power
45W RMS **400W**



N-T30 30mm V.C.
6Ω peak power
8W RMS **100W**



NSE 6 6.5"
4Ω / 2-way peak power
25W RMS **300W**

NSE 5 5.25"
4Ω / 2-way peak power
20W RMS **260W**

NSE 4 4"
4Ω / 2-way peak power
15W RMS **240W**



NSE 963 6x9"
4Ω / 3-way peak power
80W RMS **600W**

NSE 953 6x9"
4Ω / 3-way peak power
35W RMS **500W**

NSE 76 6.5"
4Ω / 3-way peak power
45W RMS **420W**

NSE 55 5.25"
4Ω / 2-way peak power
20W RMS **360W**

NSE 61 6.5"
4Ω / 1-way peak power
20W RMS **260W**



NSE 952 6x9"
4Ω / 2-way peak power
25W RMS **420W**

NSE 65 6.5"
4Ω / 2-way peak power
25W RMS **380W**

NSE 45 4"
4Ω / 2-way peak power
15W RMS **350W**

NSE 51 5.25"
4Ω / 1-way peak power
15W RMS **220W**



NSE 66 6"
4Ω / 2-way peak power
25W RMS **380W**



NSE 41 4"
4Ω / 1-way peak power
12W RMS **200W**



POWER AMPLIFIERS

NGTD1200.1

Mono CH

Class-D
RMS 400Wx1 @ 4Ω
RMS 800Wx1 @ 2Ω
RMS 1200Wx1 @ 1Ω

peak power
8000W

NGTD600.1

Mono CH

Class-D
RMS 300Wx1 @ 4Ω
RMS 500Wx1 @ 2Ω
RMS 600Wx1 @ 1Ω

peak power
6000W

NGTA704

4/3/2 CH

Class-A/B
RMS 60Wx4 @ 4Ω
RMS 90Wx4 @ 2Ω
RMS 180Wx2 @ 4Ω (Bridged)

peak power
4500W

NGTA602

2/1 CH

Class-A/B
RMS 60Wx2 @ 4Ω
RMS 90Wx2 @ 2Ω
RMS 180Wx1 @ 4Ω (Bridged)

peak power
2500W



NK-60.4

4/3/2 CH

Class-A/B
RMS 60Wx4 @ 4Ω
RMS 80Wx4 @ 2Ω

peak power
1000W

NK-300.1

Mono CH

Class-A/B
RMS 300Wx1 @ 4Ω
RMS 400Wx1 @ 2Ω

peak power
1000W



PM-150.1

Mono CH

Class-D
RMS 350Wx1 @ 4Ω
RMS 750Wx1 @ 2Ω

peak power
3000W

PM-360.4

4/3/2 CH

Class-A/B
RMS 90Wx4 @ 4Ω
RMS 100Wx4 @ 2Ω
RMS 150Wx2 @ 4Ω (Bridged)

peak power
2200W



NGTD4

4/3/2 CH

Class-D
RMS 50Wx4 @ 4Ω

peak power
1000W



PL-475

4/3/2 CH

Class-A/B
RMS 75Wx4 @ 4Ω
RMS 100Wx4 @ 2Ω
RMS 180Wx2 @ 4Ω (Bridged)

peak power
1800W



BASS TUBE & SUBWOOFER BOX

NBT12A

12"

4Ω
130W RMS

peak power
1200W

NBT10A

10"

4Ω
110W RMS

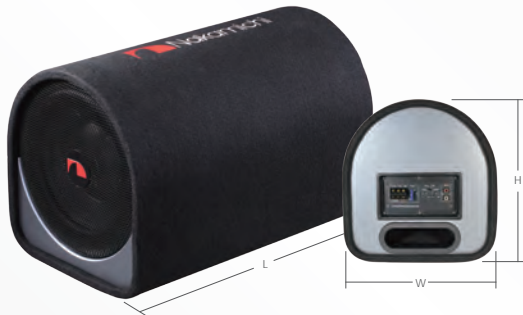
peak power
1000W

NBT8A

8"

4Ω
90W RMS

peak power
800W



NBX30A

12"

4Ω
120W RMS

peak power
1200W

NBX25A

10"

4Ω
100W RMS

peak power
1000W

NBX20A

8"

4Ω
80W RMS

peak power
800W



NBT120

12"

4Ω
300W RMS

peak power
1800W



Model \ Size	L	W	H
NBT12A	18.9" / 480mm	13.4" / 340mm	13.8" / 350mm
NBT10A	18.9" / 480mm	11.2" / 285mm	12.0" / 305mm
NBT8A	18.9" / 480mm	9.4" / 240mm	10.0" / 255mm
NBX30A	18.9" / 480mm	13.4" / 340mm	13.8" / 350mm
NBX25A	18.9" / 480mm	11.2" / 285mm	12.0" / 305mm
NBX20A	18.9" / 480mm	9.4" / 240mm	10.0" / 255mm
NBT120	26.0" / 660mm	-	13.2" / 335mm

ACCESSORIES

NK-WK8

Wire Kits

8 GA

- ▼ Power cable: 8GA, 5.0m matt blue, 45x7x0.12mm, CCA, OD: 6.5mm
- ▼ Ground cable: 8GA, 1.0m matt black, 45x7x0.12mm, CCA, OD: 6.5mm
- ▼ Remote cable: 18GA, 5.0m blue, 29x0.15mm, CCA, OD: 2.5mm
- ▼ RCA cable: 5.0m matt grey, [0.12CUx7x2+foil]x2, OD: 4+4mm
- ▼ Fuse: 60A
- ▼ Accessories: O-shape terminal x 2pcs, U-shape terminal x 2pcs, Red connector x 2pcs, Black connector x 2pcs, Cable tie x 10pcs, Black grommet x 1pc



NW-PC4

Power Cable

4 GA

0.12CCAx28x7x7+[0.15TCx10x12+0.15x10x12], OD: 10mm, 6m/roll

NW-PC8

Power Cable

8 GA

0.12CCAx63x7+[0.15TCx8x8+0.15x8x8], OD: 6.5mm, 12m/roll

NW-SC12

Speaker Cable

12 GA

OFC

7x42x0.12TCAx2C, OD: 4.5+4.5mm, 12m/roll

NW-SC16

Speaker Cable

16 GA

OFC

7x16x0.12TCAx2C, OD: 3.5+3.5mm, 12m/roll

NW-SC18

Speaker Cable

18 GA

OFC

3x24x0.12TCAx2C, OD: 3+3mm, 12m/roll



Metal Head - Golden Plated

NR-R52

RCA Lead

5 M

2 Right to

NR-RL52

RCA Lead

5 M

2 Right Angled

NR-RL32

RCA Lead

3 M

2 Right to 2 Right Angled

NR-R12

RCA Lead

1 M

NR-RF022

RCA Lead

22 CM

1M to 2F

NR-RM022

RCA Lead

22 CM

1F to 2M

Wine Red Cable, [0.12x2x2+foil]x2, OD: 4+4mm



1M to 2F

1F to 2M

Plastic Head - Golden Plated

NR-P53

RCA Lead

5 M

NR-P33

RCA Lead

3.5 M

NR-P23

RCA Lead

2 M

NR-P13

RCA Lead

1 M

NR-P053

RCA Lead

0.5 M

NR-PF023

RCA Lead

22 CM

1M to 2F

NR-PM023

RCA Lead

22 CM

1F to 2M

Grey Cable, [0.12CUx7x2+foil]x2, OD: 4+4mm



NF4

Fuse Holder

60Ax4

- ▼ 3×0GA/4GA in, 4×4GA/8GA out
- ▼ suitable for 0GA/4GA/8GA cable
- ▼ nickel plated metals
- ▼ resistant to high temperatures and anti-throw case



NF2

Fuse Holder

60Ax2

- ▼ 1×0GA/4GA in, 2×4GA/8GA out
- ▼ suitable for 0GA/4GA/8GA cable
- ▼ nickel plated metals
- ▼ resistant to high temperatures and anti-throw case



NF1

Fuse Holder

60Ax1

- ▼ suitable for 4GA/8GA cable
- ▼ nickel plated metals
- ▼ resistant to high temperatures and anti-throw case

